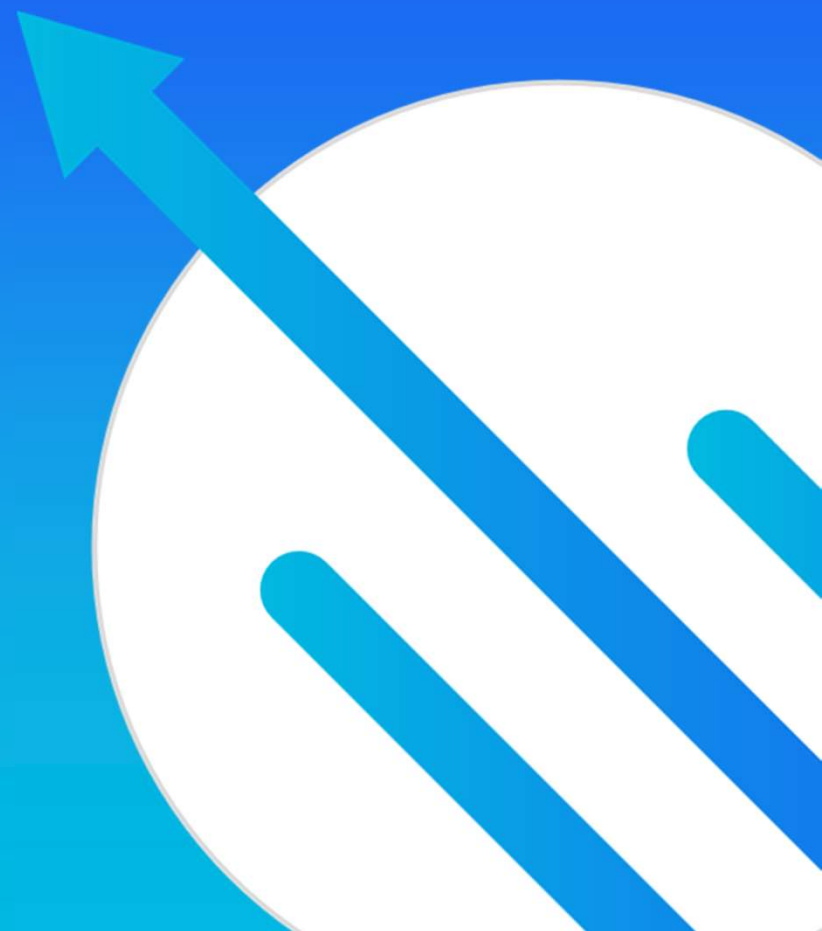




Investor Presentation

June 2023



Forward Looking Statements

This presentation of Maris-Tech Ltd. (the “Company”) contains “forward-looking statements” within the meaning of the Private Securities Litigation Reform Act and other securities law. Words such as “expects,” “intends,” “plans,” “believes,” “seeks,” “estimates,” and similar expressions or variations of such words are intended to identify forward-looking statements. For example, the Company is using forward-looking statements when it discusses its vision, the potential of its product, its strategy, market potential for its product, its paradigm, commercialization of its product and its future growth. Forward-looking statements are not historical facts, and are based upon management’s current expectations, beliefs and projections, many of which, by their nature, are inherently uncertain. Such expectations, beliefs and projections are expressed in good faith. However, there can be no assurance that management’s expectations, beliefs and projections will be achieved, and actual results may differ materially from what is expressed or indicated by the forward-looking statements. Forward-looking statements are subject to risks and uncertainties that could cause actual performance or results to differ materially from those expressed in the forward-looking statements. For a more detailed description of the risks and uncertainties affecting the Company, the reference is made to the Company’s reports filed from time to time with the Securities and Exchange Commission (the “SEC”), including, but not limited to, the risks detailed in the Company’s Annual Report on Form 20-F for the year ended December 31, 2022, filed with the SEC on March 6, 2023. Forward-looking statements speak only as of the date the statements are made. The Company assumes no obligation to update forward-looking statements to reflect actual results, subsequent events or circumstances, changes in assumptions or changes in other factors affecting forward-looking information except to the extent required by applicable securities laws. If the Company does update one or more forward-looking statements, no inference should be drawn that the Company will make additional updates with respect thereto or with respect to other forward-looking statements.



A collage of various images related to defense and technology, including drones, ships, a tank, a car, a satellite, and a globe, set against a blue background. The images are arranged in a grid-like fashion, with some overlapping. The top row features a person in a suit, a tank, a drone, a ship, and a globe. The middle row shows a satellite, a drone, a globe, and a car. The bottom row includes a satellite, a globe, a car, and a globe. The overall theme is defense and technology.

Maris-Tech at a Glance



Foundation

A pioneer in AI-based video analytics technology, founded in 2008



Use Cases

Situational awareness, site and infrastructure inspection, crowd and traffic control, crime prediction, space exploration, precision agriculture , and more



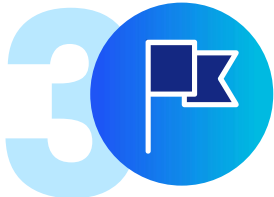
Team

Electronics engineering and imaging experts, with a strong presence in the US and other territories



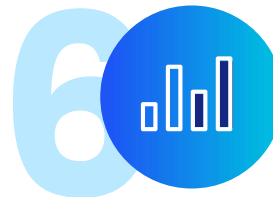
Track record

Solution provider of choice for the reliable intelligence and actionable insights needed by professional industries, governments, military sectors, and law enforcement



Innovation

Edge AI accelerated video solutions designed to integrate with autonomous and semi-autonomous land, sea, air, and space platforms



 **Nasdaq**
Listed

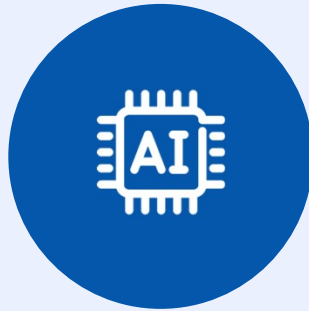

STOCK SYMBOL
MTEK
ON THE NASDAQ



Key Investment Highlights



Significant business milestones since IPO



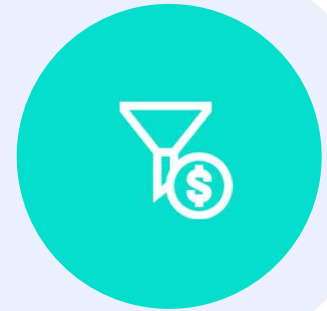
Edge AI and IVASR* are driving multiple fast-growing use cases and markets**



Maris has a **proven track record** and broad eco-system



The Maris Edge – innovation, full system solutions



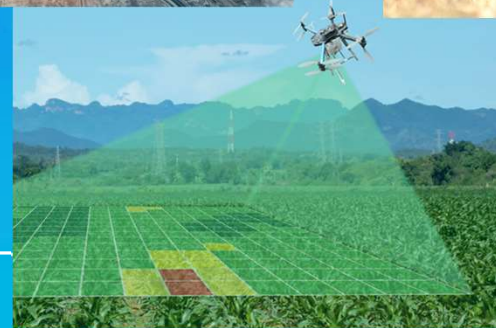
Revenue growth, a growing backlog backed by strong liquidity

*Intelligent video analytics, streaming & recording

**See Market Size and Forecast



Public Announcements Since IPO



maris

Announcements Since IPO

**May
'23**

Distribution Agreement in Turkey

IMCA Elektronik is a leading defense, aviation, transportation, industrial, and consumer electronics distributor

**May
'23**

Repeat Order

\$410,000 from a leading defense contractor

**May
'23**

The Largest Delivery Agreement

Agreement with Art of Logic Australia for \$7,500,000 for the Callisto based Uranus-AI

**Feb
'23**

Leadership

Nir Ben Moshe, former Director of Security of the Israeli defense establishment, joins Advisory Board

**Feb
'23**

Leadership

Les Litwin, seasoned industry marketing expert, joins Advisory Board

**Jan
'23**

New Customer in Australia

\$660,000 purchase order for Jupiter-AI based platform from a new customer based in Australia

**Jan
'23**

New Product

Launches the development of Uranus-AI- the next generation of 8K Ultra-HD video and AI acceleration edge computing platform

**Dec
'22**

New Customer in Israel

\$1,100,000 purchase order from a leading Israeli defense company

**Sept
'22**

New Customer in Israel

Enters agreement with leading defense company for up to \$500,000 in purchase orders for units of the Opal platform



Announcements Since IPO

Aug
'22

R&D Grant

Receives a grant for the development of an advanced system for drone fault prediction

July
'22

New Product

Launches the Jupiter-AI, a high-end multiple-stream video platform with AI acceleration

July
'22

New Space Design Win

Awarded the Beresheet 2 video solution

Jun
'22

UK Sales

\$300,000 order from the UK distributor

Jun
'22

New Order

\$300,000 from a leading defense company

May
'22

EU Marketing

Participating Eurosatory 2022 Aerospace, Defense and Security exhibition

Apr
'22

First US Customer

\$300,000 order from the first major US customer

Mar
'22

Leadership

Appoints a 20-year industry veteran to lead sales and marketing in the US market

Feb
'22

Nasdaq Listing

Completes initial public offering of ordinary shares and warrants for proceeds of \$17,800,000

Sept
'22

US Marketing

Presents Jupiter-AI at Commercial UAV Expo Las Vegas



Management



**Israel
Bar**

CEO, Founder



**Carmela
Bastiker**

COO



**Magenya
Roshanksi**

CTO



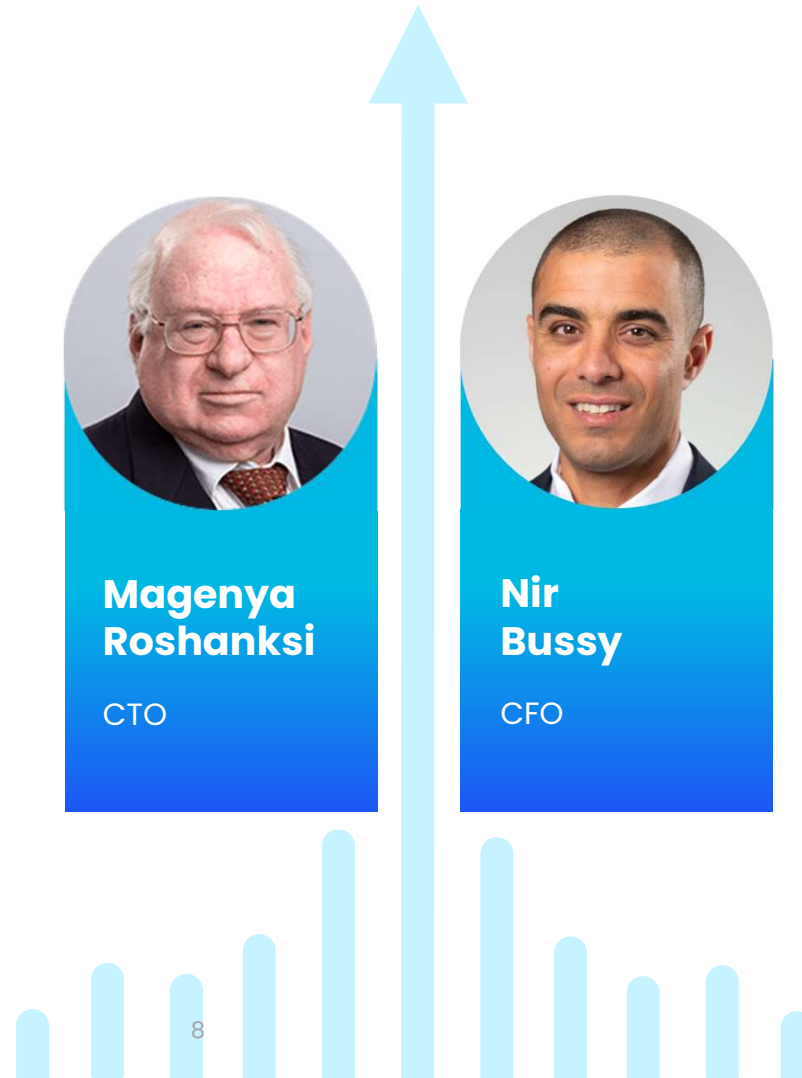
**Nir
Bussy**

CFO



**David
Raviv**

VP Marketing



Advisory Board



Nir Ben Moshe

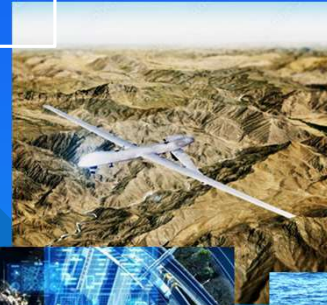
- Former Director of Security for the Israel defense establishment (Ministry of Defense, industries, manufacturers, and R&D organizations)
- Experience managing large-scale, highly sensitive national security operations worldwide



Leslie G. Litwin

- Managing director and founder of Antrica, industry-leading video encoders and decoders
- Founder of Zilica Ltd., specialized video and CCTV ICs and sub-assemblies

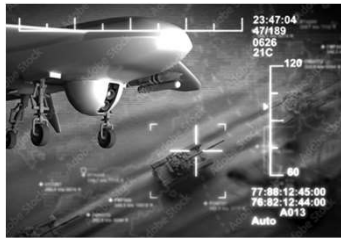
Large, Fast
Growing Markets



maris

Edge Video Streaming and AI Driving Large, Fast-Growing Markets

Intelligent video analytics, streaming & recording (IVASR) combined with Edge AI delivers quicker insights on-site, enabling real-time decision-making



Defense

UGV-mounted systems, armored vehicles, drones, weapon sights,



Homeland Security & Law Enforcement

Drones, covert applications and intelligence gathering



Aerospace & New Space

UAV-mounted systems, helmet-mounted systems, aircraft and spacecraft



Commercial Industries

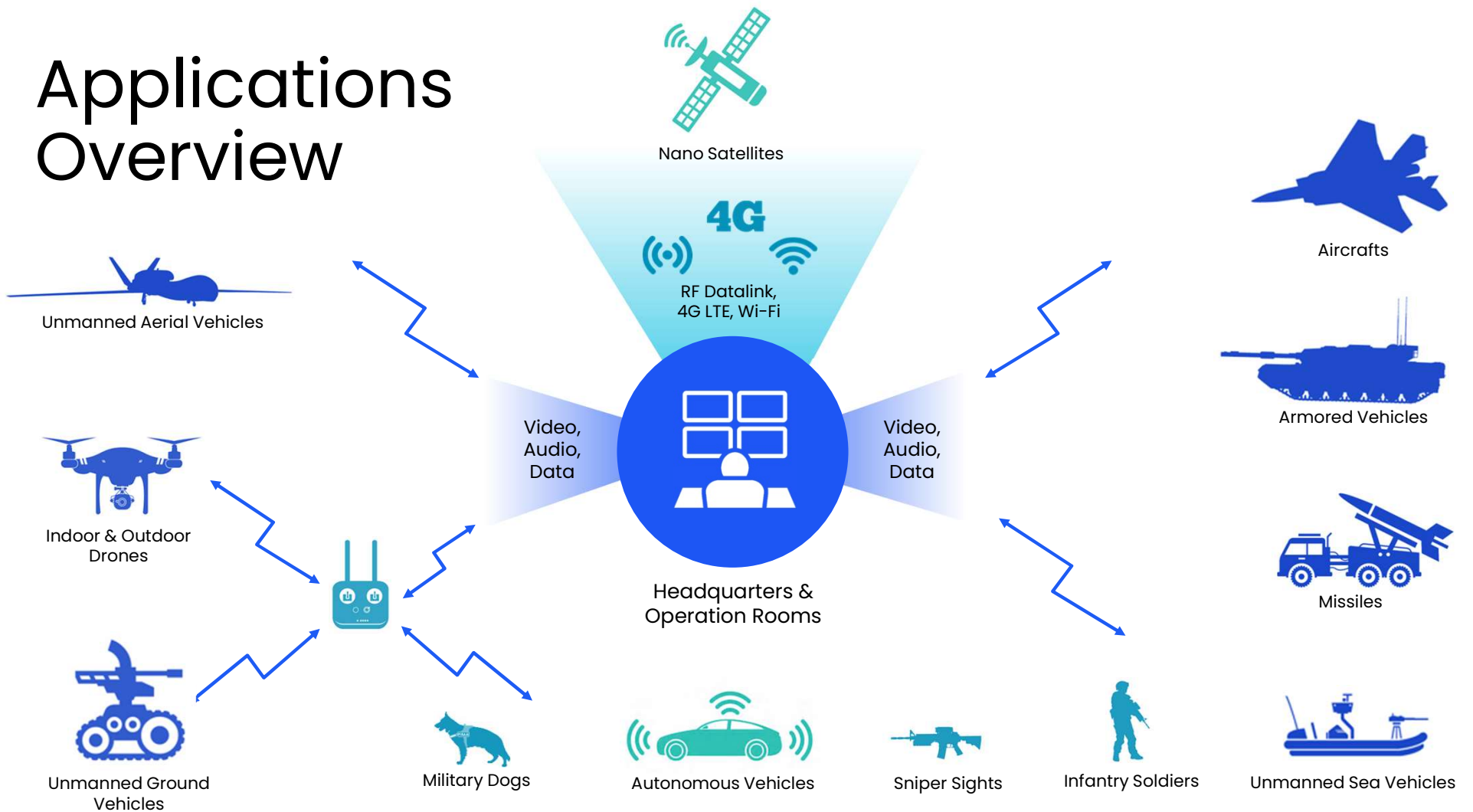
Smart retail, site infrastructure, precision agriculture



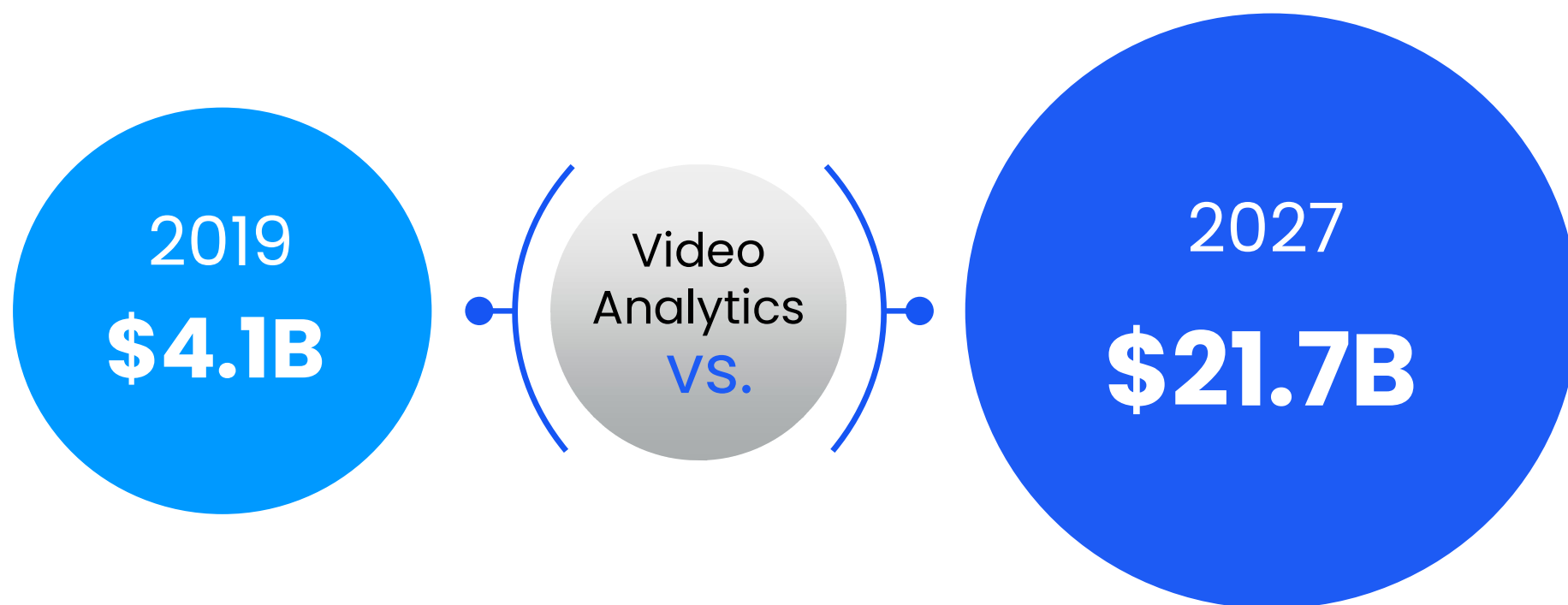
Smart city

Crowd control, real-time traffic monitoring and dynamic situational adaptation

Applications Overview



Market Size and Forecast



Defense, Aerospace, HLS and Commercial markets



Selected Customers

- ✓ Successfully deployed by more 100+ companies and agencies around the globe*
- ✓ Across a wide range of industries
- ✓ Fully operational and fielded
- ✓ Delivering strong benefits and ROI

HLS

Aero Sol
Aeronautical Solutions

Defence

Elbit Systems



משרד ראש הממשלה



RAFAEL
SMART AND TO THE POINT



משרד הביטחון
MINISTRY OF DEFENCE

LEONARDO

Commercial

FLYABILITY

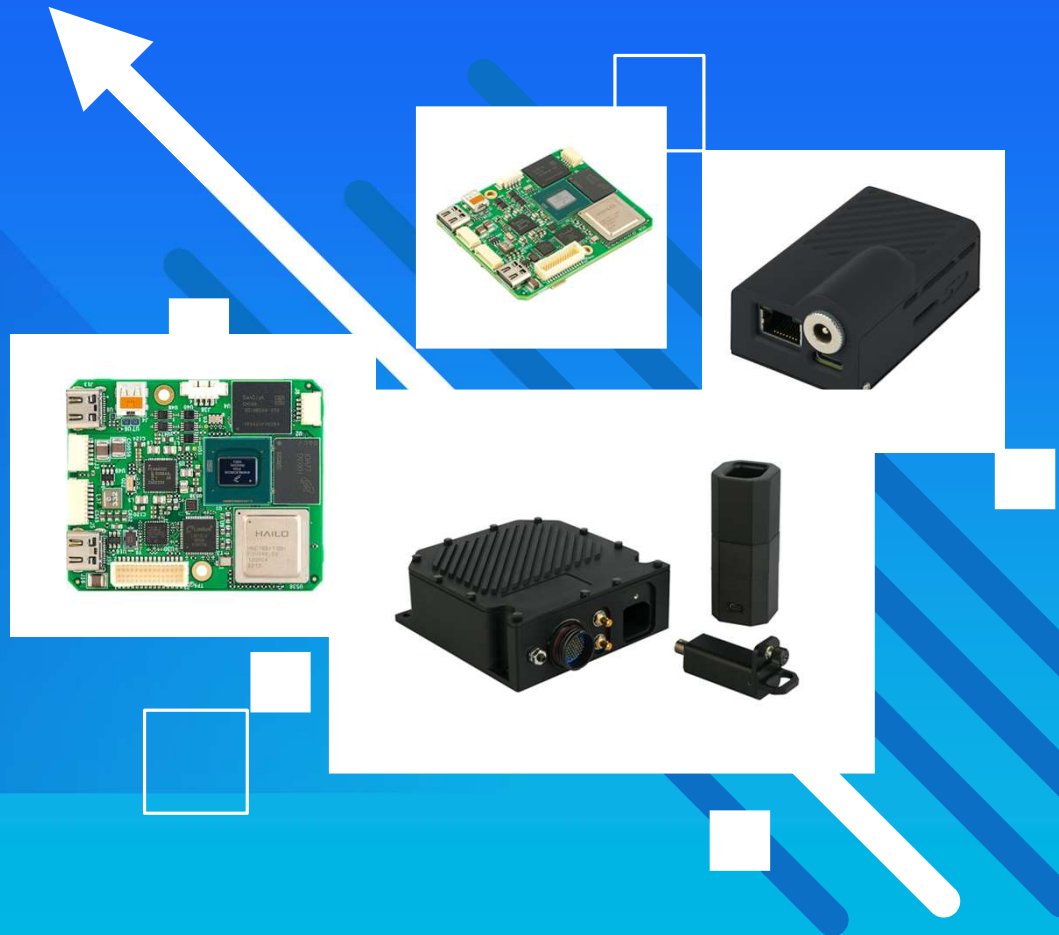
ART OF LOGIC

*Includes both direct and indirect customers

Ecosystem & Partners



The Maris Edge: Innovation & Full System Solutions



maris

The Maris Edge

High Video Quality

Supports the most advanced video compression standards for real-time quality transmission

Low Latency

Offers up to 100ms end-to-end latency as well as an FPGA-based solution with sub-frame ultra-low-latency streaming

Best in Class SwaP

Miniature and lightweight, with extremely efficient power consumption to deliver the longer operating life needed for extended transmissions

Multiple streams

Simultaneously supports multiple sensors on a single platform, essential for providing complete imaging coverage

Powerful AI acceleration

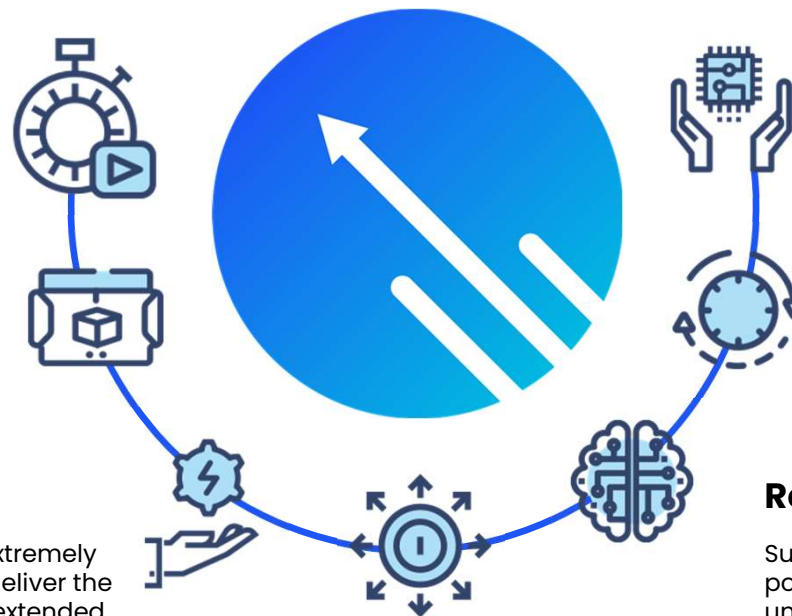
Sophisticated AI processor specifically designed to accelerate deep learning applications on edge devices

Modular and Flexible

Easily integrates with independently designed systems and can be configured to support any electro-optical and thermal sensor standard

Robust communication

Supports a variety of miniature and low-power stable wireless communications for uninterrupted transmission in indoor/outdoor harsh environments, including Forward Error Correction (FEC)



Leading Edge, Full System Solutions

Jupiter AI

A miniature, low-power and low-cost surround video & AI edge computing platform for new space applications

Miniature and lightweight

High video quality over narrow-band wireless networks

Low power

Low-latency streaming

Powerful deep learning and AI acceleration enabled by Hailo-8



Opal

Tactical Edge Computing System

Low power

Low-latency streaming

1 Tb Micro SD Memory detachable storage

High video quality over narrow-band wireless networks

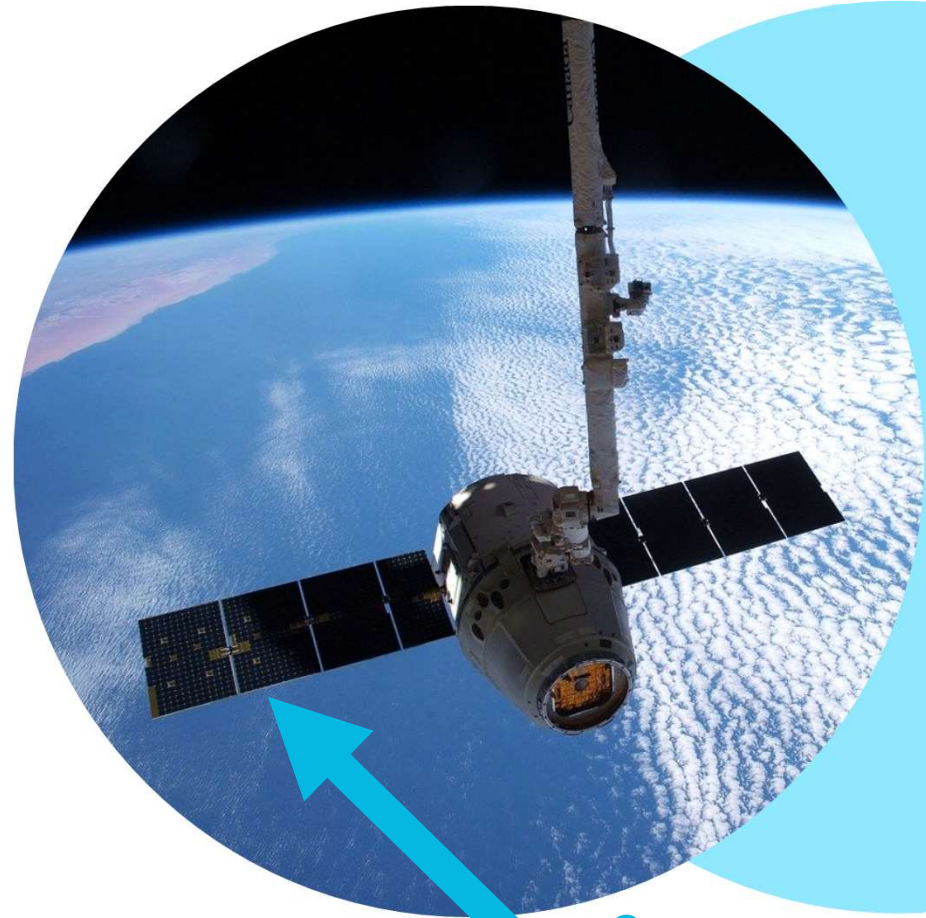
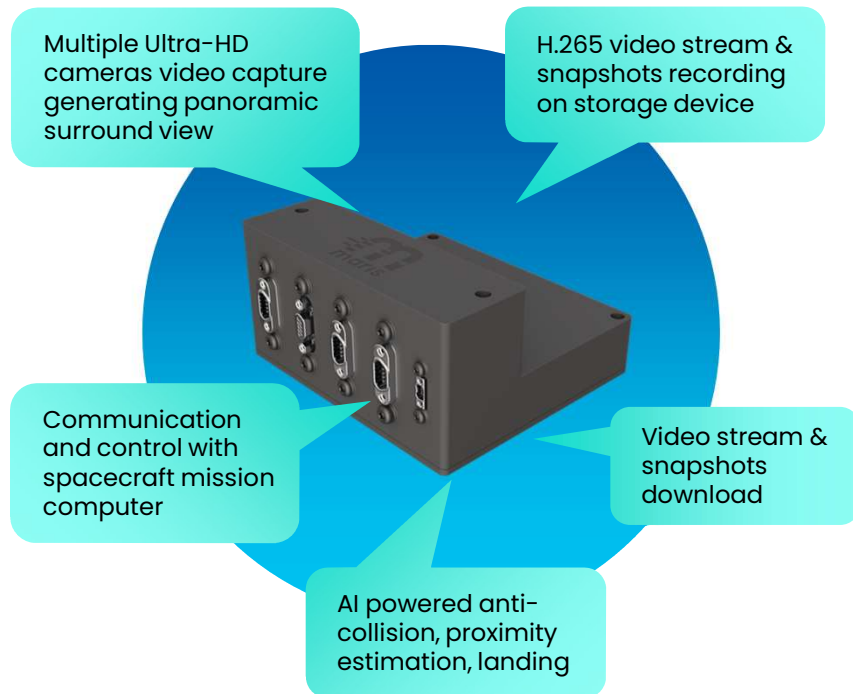
Powerful AI acceleration enabled by Hailo-8



maris

New Frontiers

A miniature, low-power and low-cost surround video & AI edge computing platform for new space applications



maris

New Frontiers

Drone Fault Prediction and Failures Diagnostics



Uses data from various sensors in the drone to monitor its performance and detect any abnormal behavior or malfunctions.



Data is collected in real-time and the reports immediately






The algorithms are also used to predict the likelihood of a fault occurring based on historical data and other factors, such as environmental conditions.

Revenue Growth & Growing Backlog



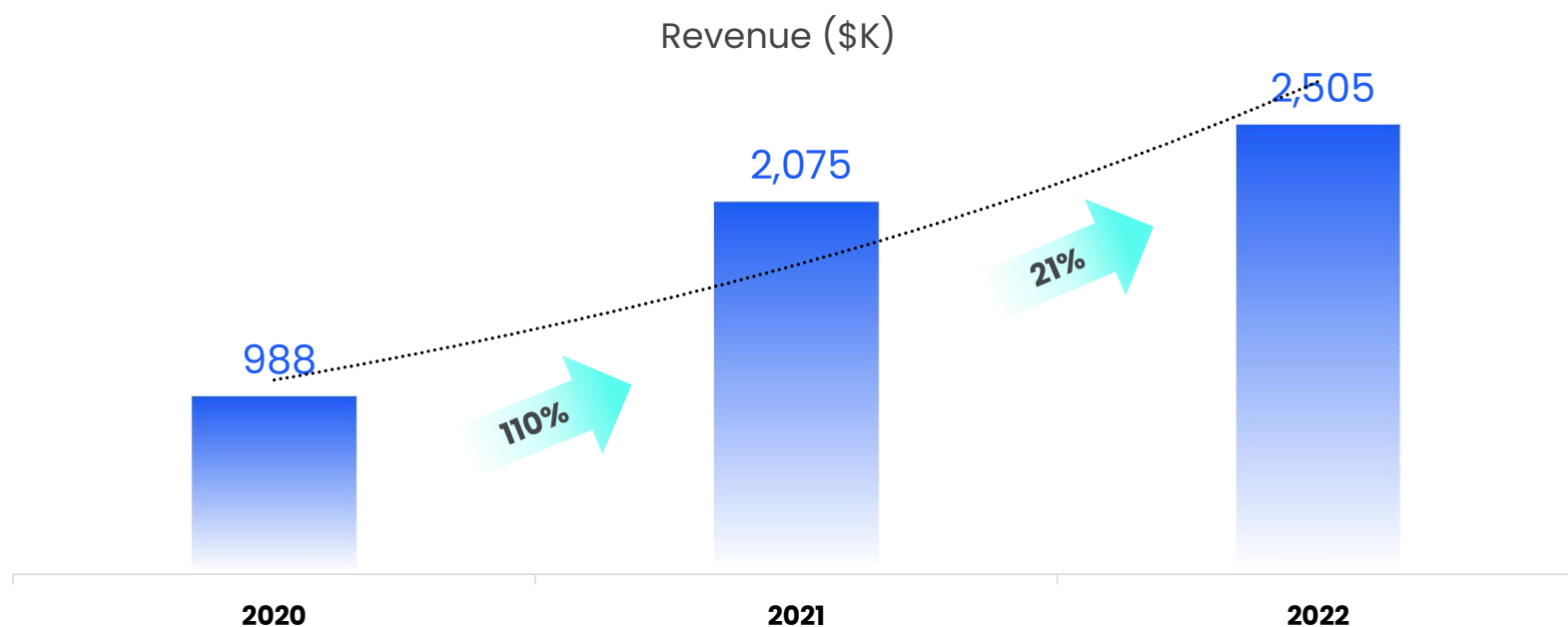
maris

Business Model

	Sample Products
OEM board level solutions	
Final products within mechanical enclosure	
System level solutions	

Revenue Growth

155% increase in revenue since 2020

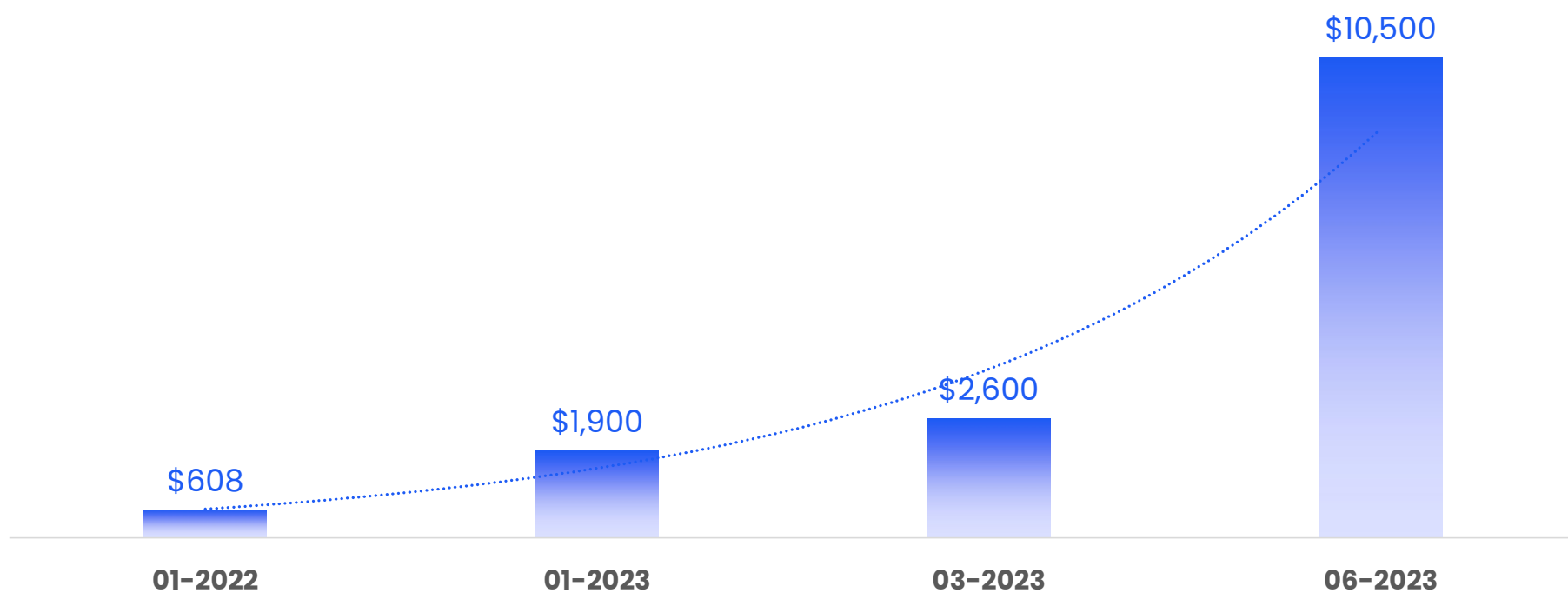


See: Maris-Tech Ltd. financial statements for the years ended 2021 and 2022 filed as part of the Company's Annual Report on Form 20-F for the years ended 2021 and 2022, respectively.



Backlog Continues to Increase

Backlog for the beginning of the period (\$K)

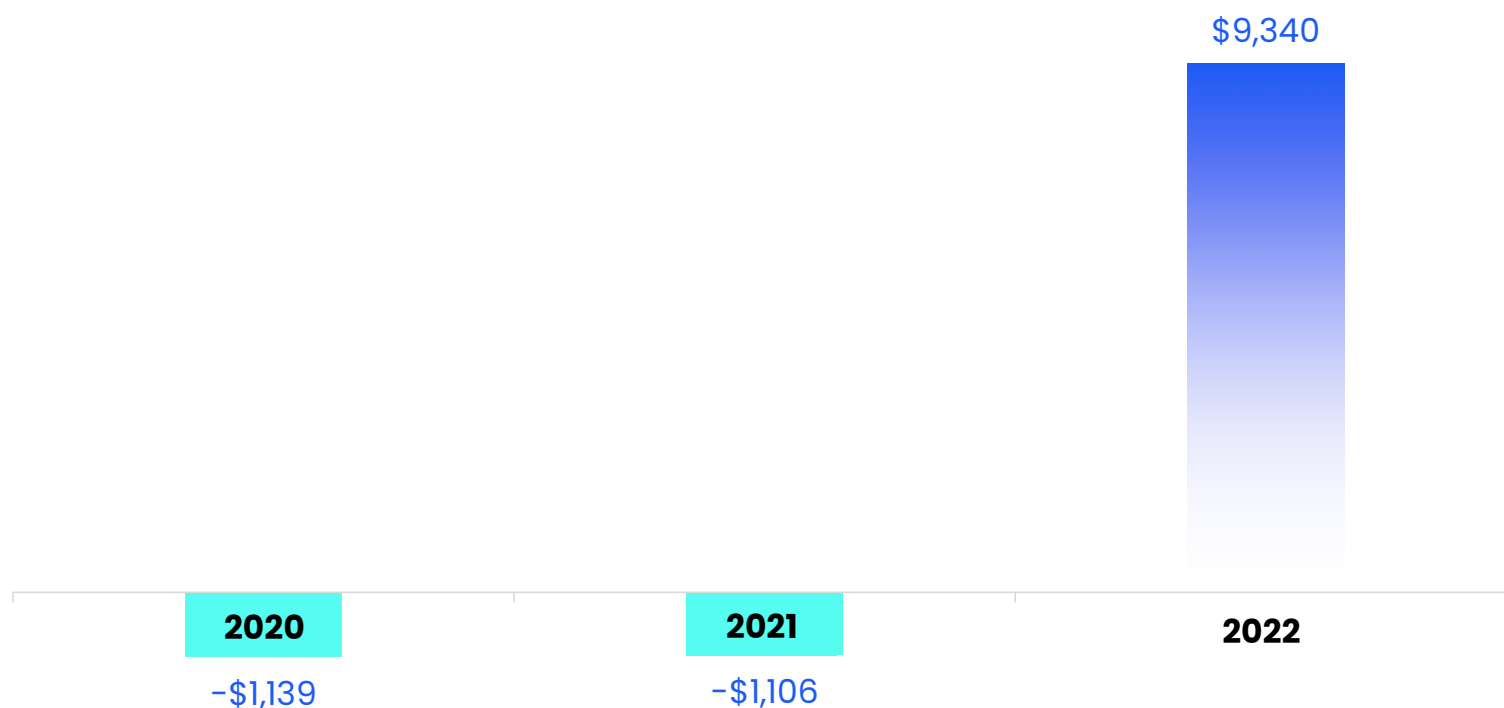


We define backlog as the accumulation of all pending orders with a later fulfillment date for which revenue has not been recognized and we consider valid.



Strong Liquidity

Cash, cash equivalents & outstanding bank loans at the end of the period (\$K)



See: Maris-Tech Ltd. financial statements for the year ended 2022 filed as part of the Company's Annual Report on Form 20-F for the year ended 2022.



Summary

Edge AI and IVAR
are driving multiple
fast-growing use
cases and markets



The Maris Edge –
Innovation, full
system solutions



**Maris has a proven
track record** and
broad eco-system



**Robust revenue
growth**, a growing
backlog backed by
strong liquidity



maris

maris



Thank you

Nir Bussy, CFO

Tel: [+972-72-2424022](tel:+972-72-2424022)

Nir@maris-tech.com

[Relevant financials](#)

